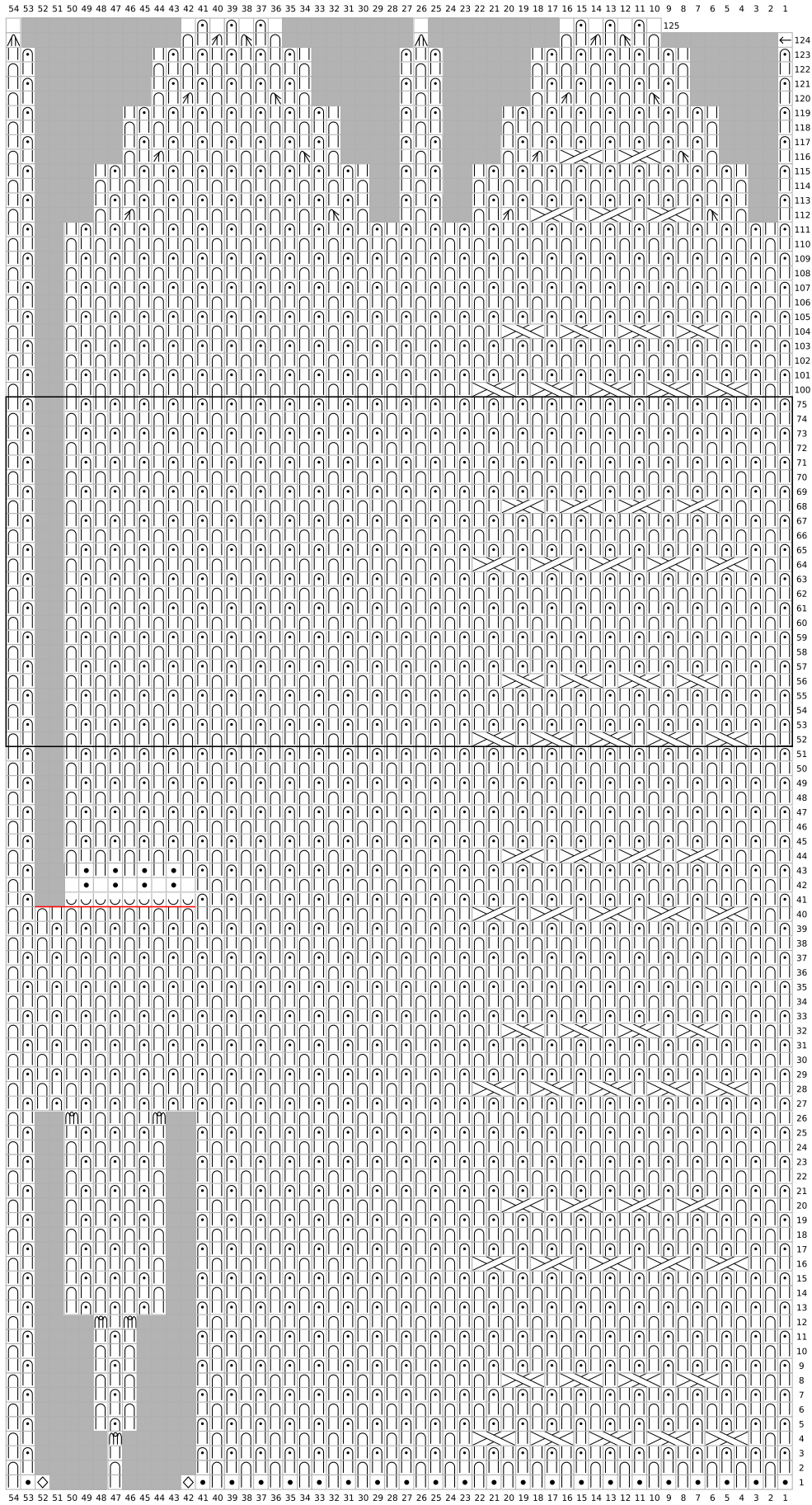
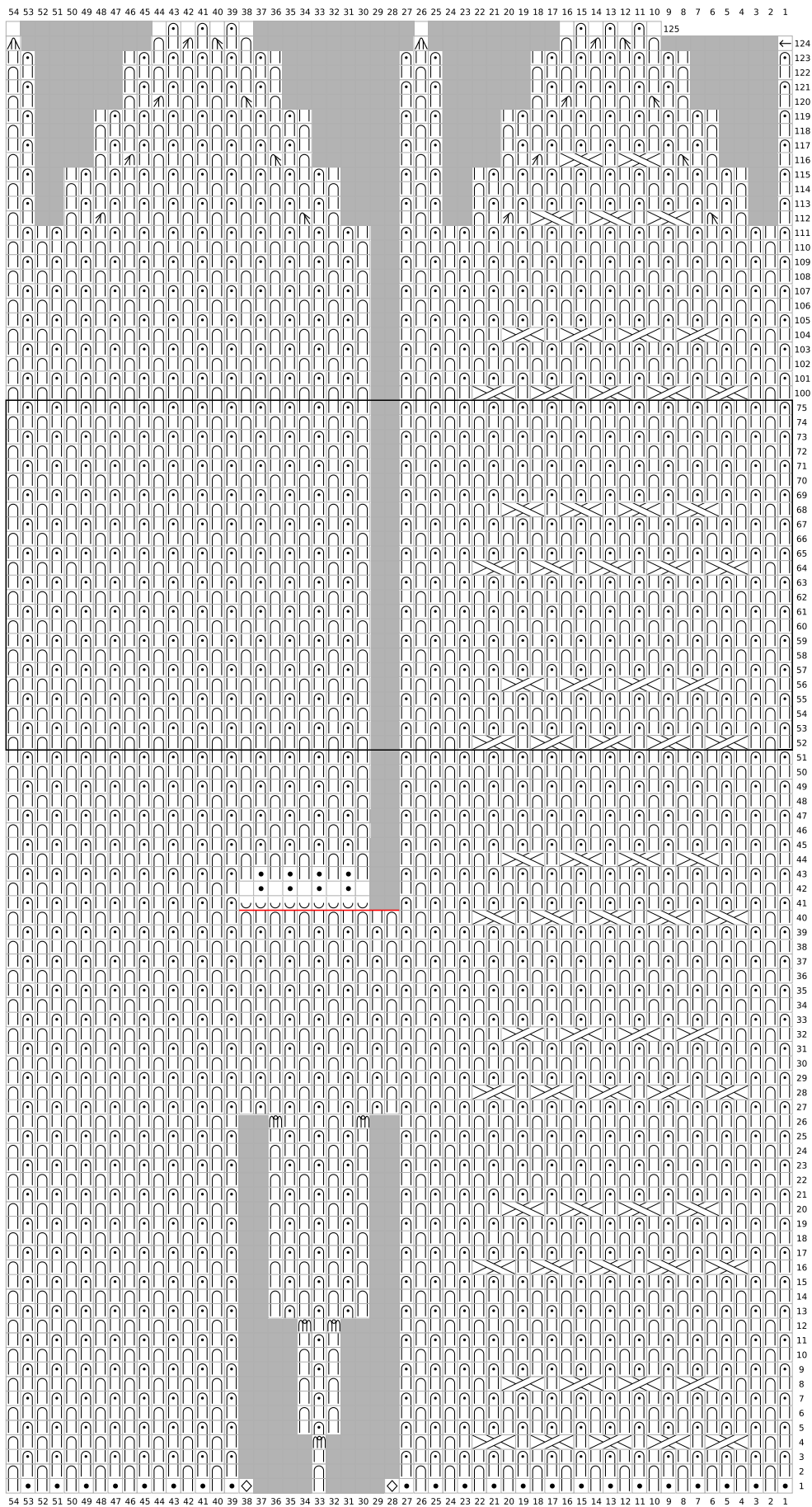


- Key
- knit
  - purl
  - grey no stitch
  - ← move marker 1 stitch left
  - ⤴ cdd
  - ⤵ brk
  - ⤴ brp
  - ⤵ yf sl1yo
  - ⤴ brcdd
  - ⤴ brc3l
  - ⤴ brc3r
  - Repeat 13[15,17]x
  - ⤴ brk3tog
  - ⤴ brsssk
  - ⤴ cast on
  - ⤴ brkyobrk
  - ⬠ Place marker
  - Place stitches on hold
  - Repeat 2[3.3] times
  - ⤴ brk2tog
  - ⤴ brssk

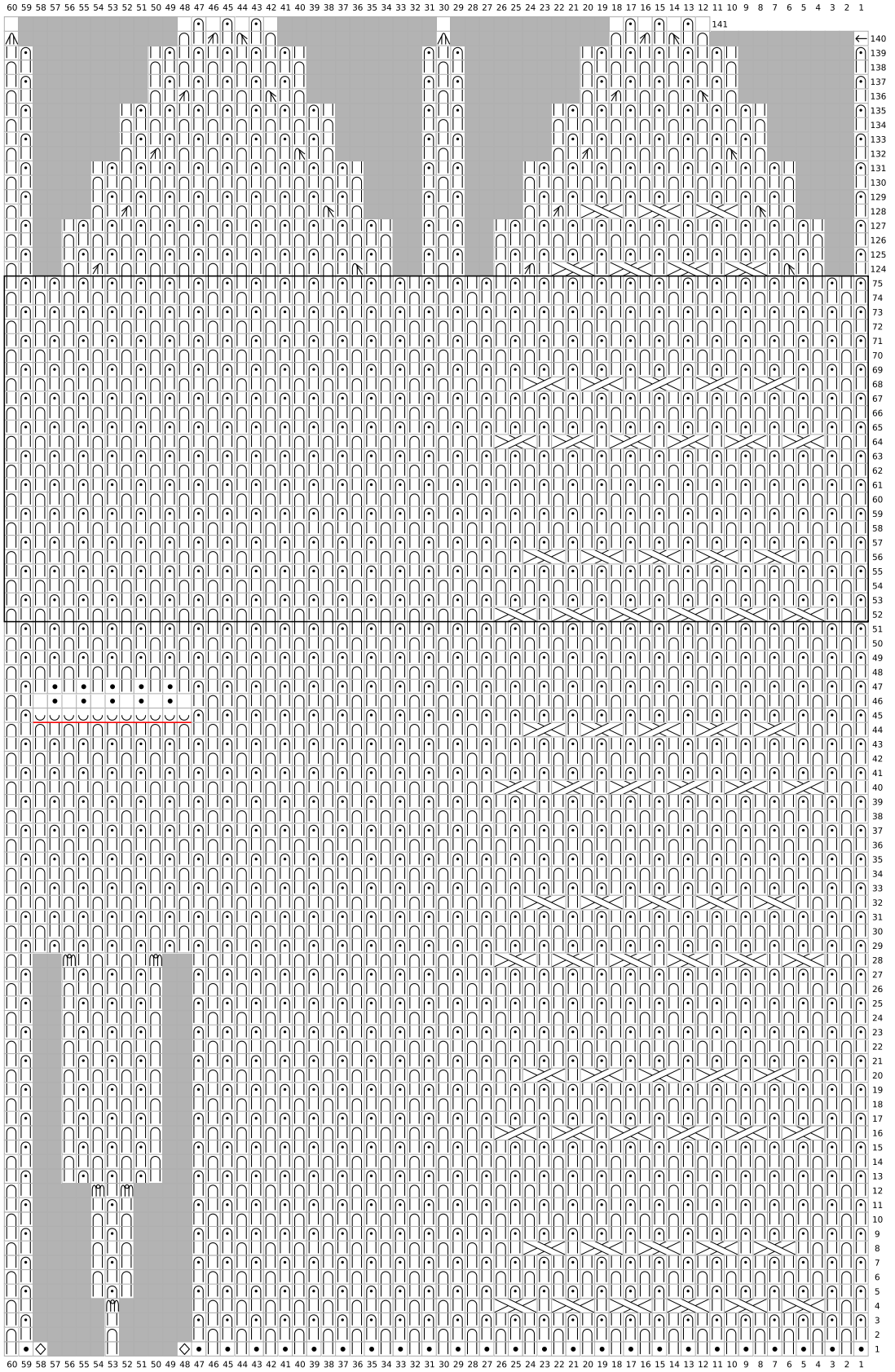
Left Mitt (5)



Right Mitt (S)

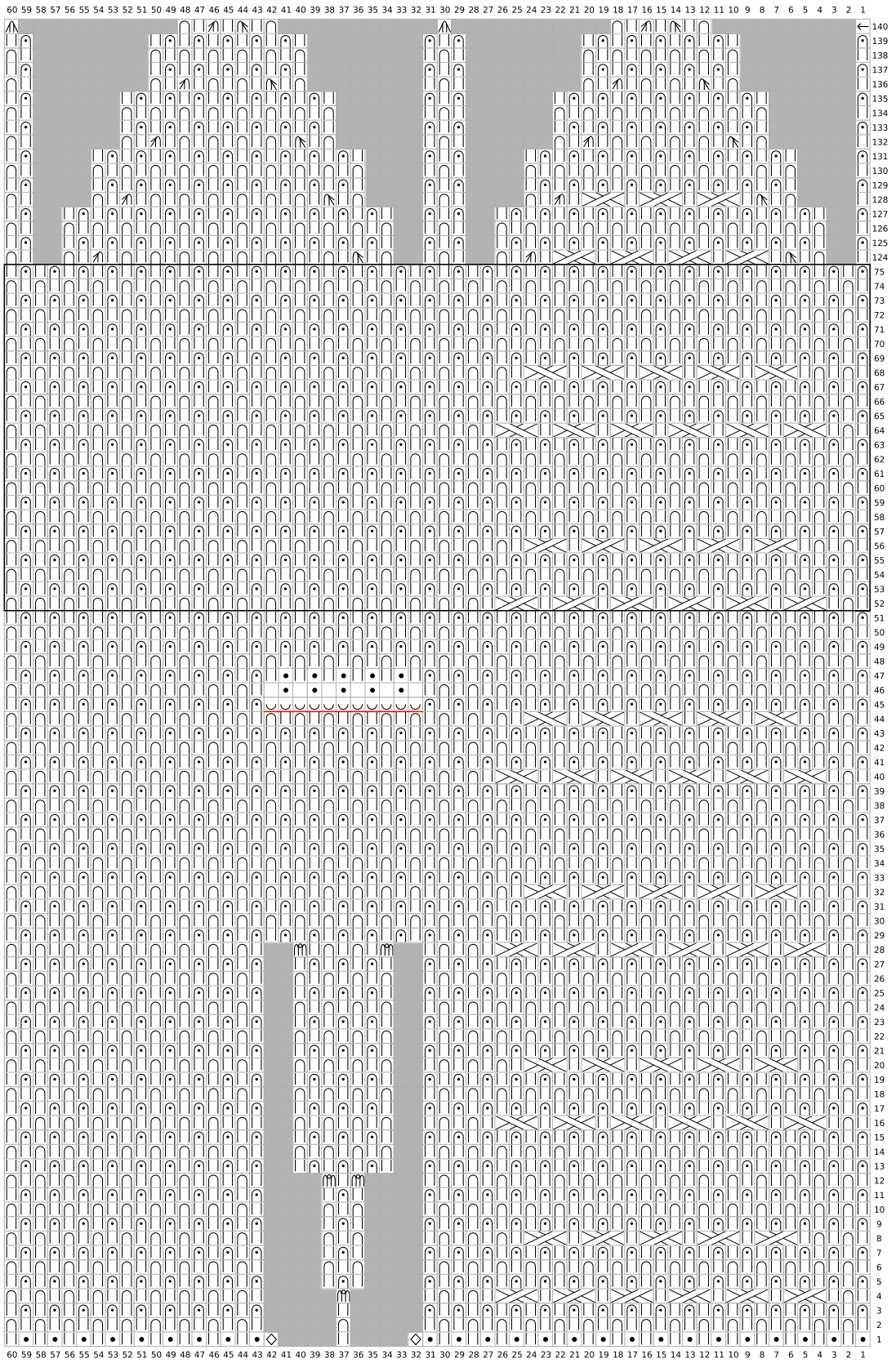


Left Mitt (M)



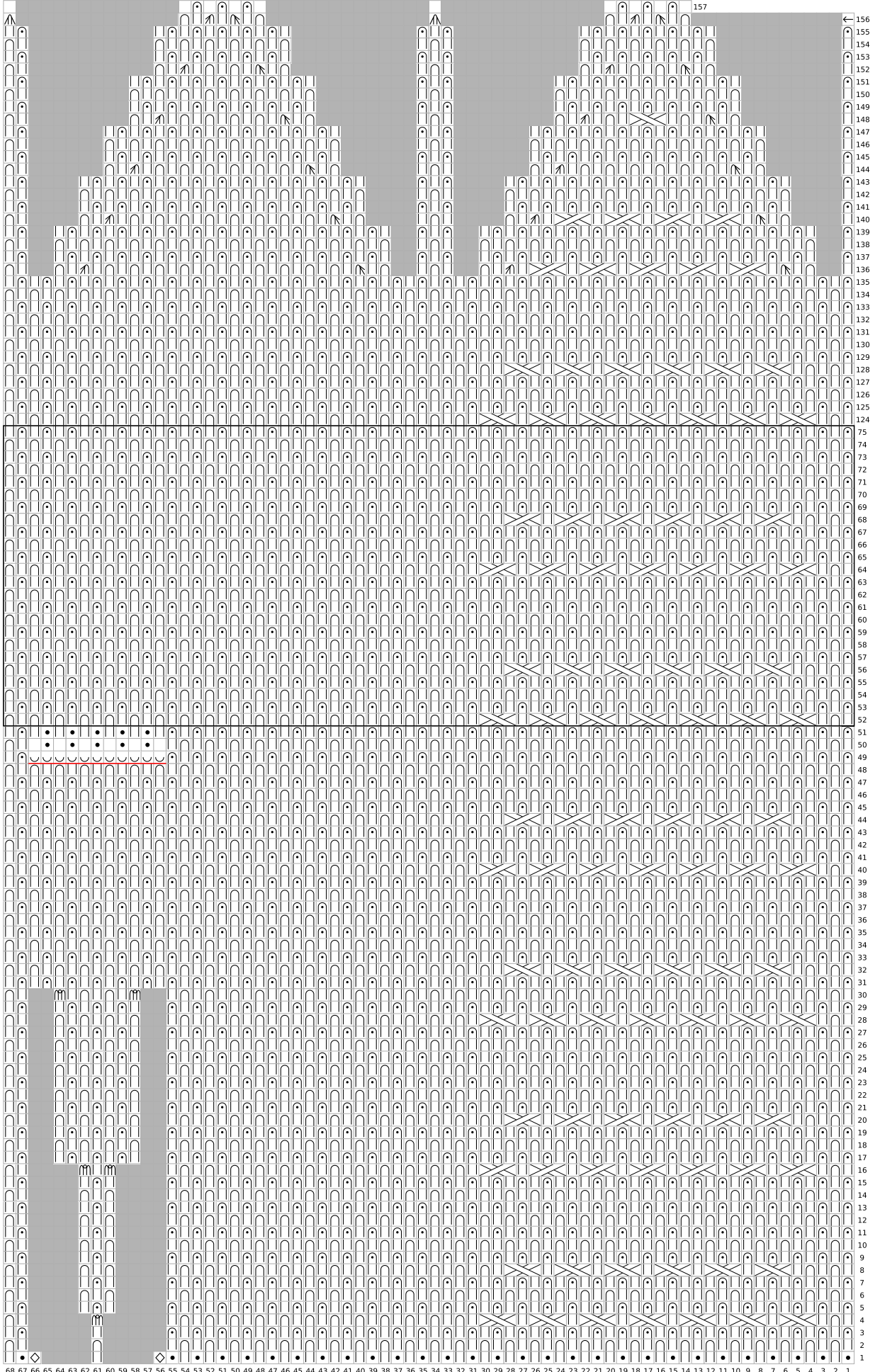


Right Mitt (M)



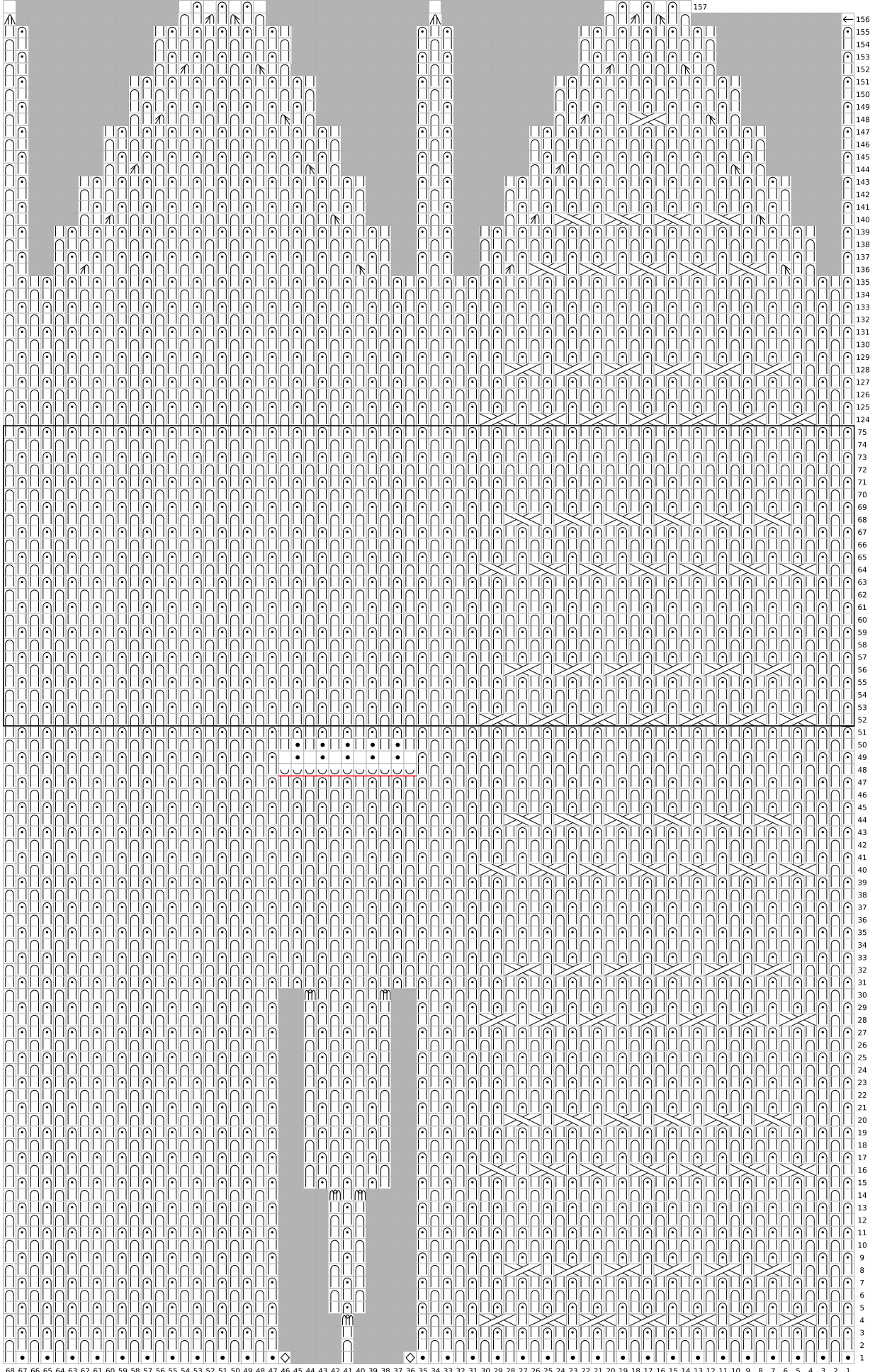
Left Mitt (L)

68 67 66 65 64 63 62 61 60 59 58 57 56 55 54 53 52 51 50 49 48 47 46 45 44 43 42 41 40 39 38 37 36 35 34 33 32 31 30 29 28 27 26 25 24 23 22 21 20 19 18 17 16 15 14 13 12 11 10 9 8 7 6 5 4 3 2 1



68 67 66 65 64 63 62 61 60 59 58 57 56 55 54 53 52 51 50 49 48 47 46 45 44 43 42 41 40 39 38 37 36 35 34 33 32 31 30 29 28 27 26 25 24 23 22 21 20 19 18 17 16 15 14 13 12 11 10 9 8 7 6 5 4 3 2 1

68 67 66 65 64 63 62 61 60 59 58 57 56 55 54 53 52 51 50 49 48 47 46 45 44 43 42 41 40 39 38 37 36 35 34 33 32 31 30 29 28 27 26 25 24 23 22 21 20 19 18 17 16 15 14 13 12 11 10 9 8 7 6 5 4 3 2 1



68 67 66 65 64 63 62 61 60 59 58 57 56 55 54 53 52 51 50 49 48 47 46 45 44 43 42 41 40 39 38 37 36 35 34 33 32 31 30 29 28 27 26 25 24 23 22 21 20 19 18 17 16 15 14 13 12 11 10 9 8 7 6 5 4 3 2 1